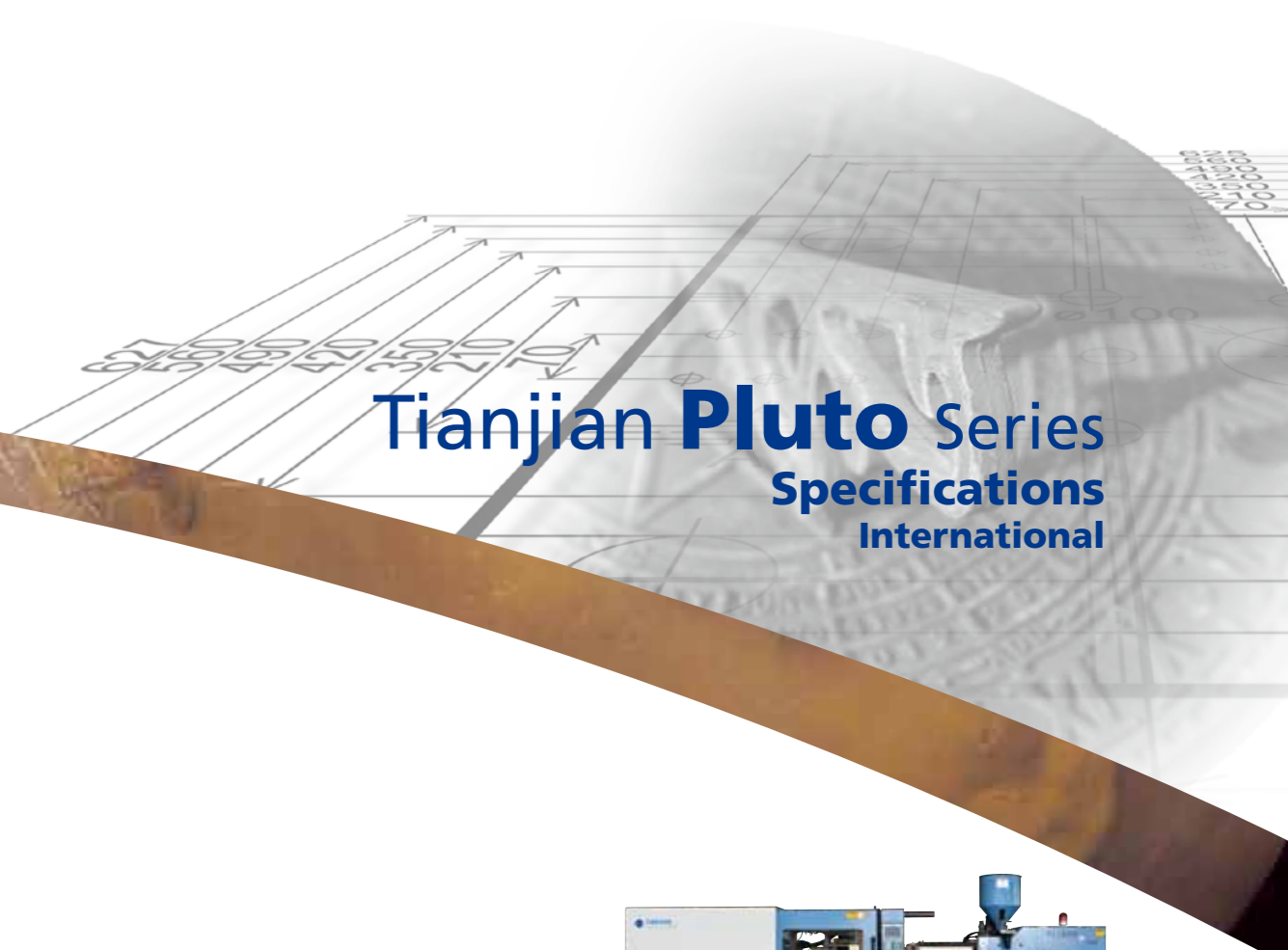


Tianjian Pluto Series



Tianjian Pluto Series
Specifications
International



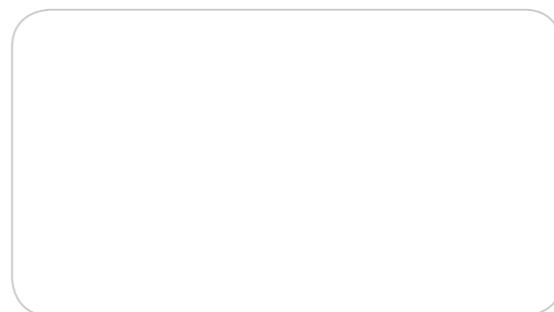
HAITIAN INTERNATIONAL HOLDINGS LIMITED

Unit 1105 Level 11
Metroplaza Tower 2
223 Hing Fong RD Kwai Fong N.T
haitian@mail.haitian.com
www.haitian.com

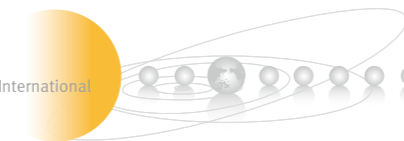
NINGBO HAITIAN Tianjian MACHINERY CO., LTD.

Export Processing Zone, Ningbo 315800 China
+86-574-86 177 242
+86-574-86 221 864
haitian@mail.haitian.com
www.haitian.com

Tianjian Partner:



HT 201.20201-IV



Specification

INJECTION UNIT

Screw Diameter	mm
Screw L/D Ratio	L/D
Shot Size (Theoretical)	cm ³
Injection Weight (PS)	g
Injection Rate	g/s
Injection Pressure	Mpa
Plasticizing Capacity(ps)	g/s
Screw Speed	rpm

CLAMPING UNIT

Clamp Tonnage	KN
Toggle Stroke	mm
Space Between Tie Bars	mm
Max.Mold Height	mm
Min. Mold Height	mm
Ejector Stroke	mm
Ejector Tonnage	KN

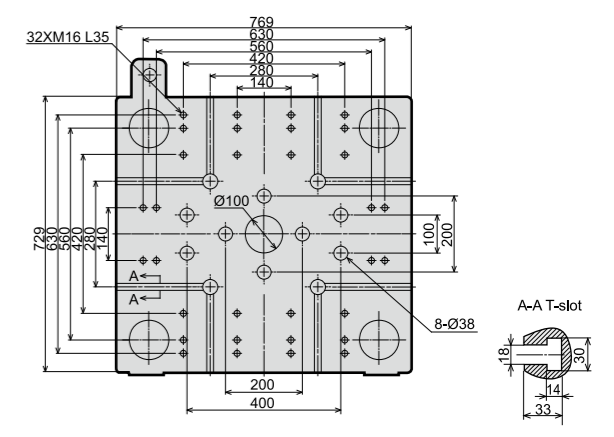
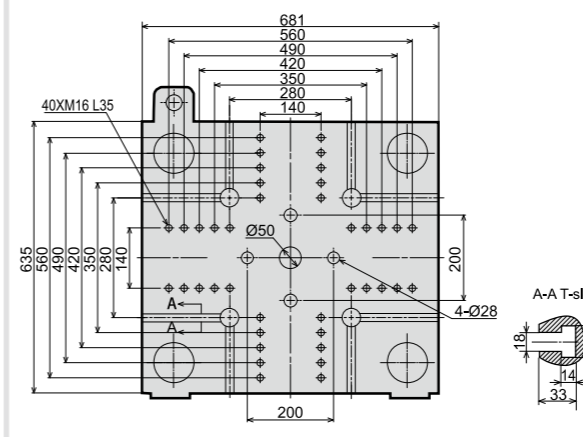
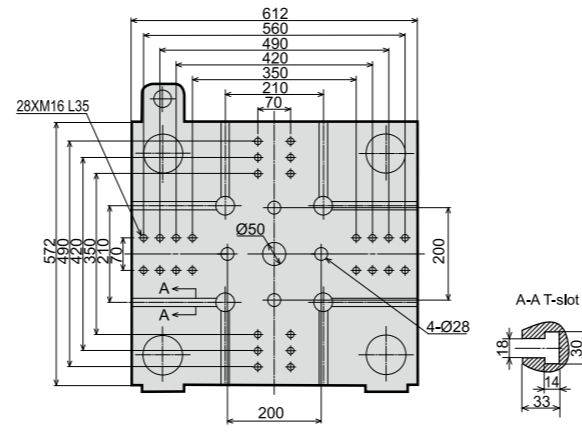
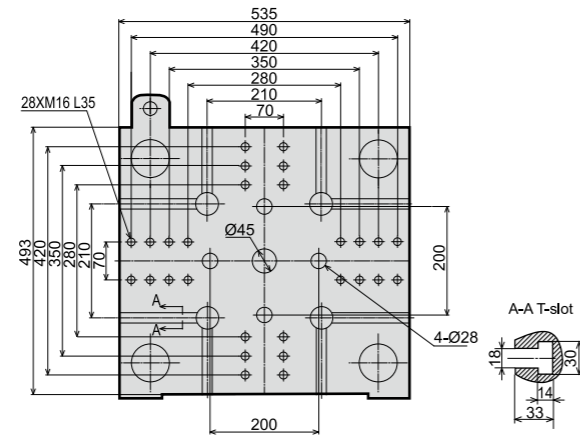
OTHERS

Max. Pump Pressure	Mpa
Pump Motor Power	Kw
Heater Power	Kw
Machine Dimension(LxWxH)	m
Machine Weight	t
Hopper Capacity	Kg
Oil Tank Capacity	L

	PL860/260			PL1200/370			PL1600/540			PL2000/770		
	A	B	C	A	B	C	A	B	C	A	B	C
Screw Diameter	32	36	40	36	40	45	40	45	50	45	50	55
Screw L/D Ratio	22.5	20	18	23.3	21	18.7	22.5	20	18	22.2	20	18.2
Shot Size (Theoretical)	121	153	188	173	214	270	253	320	395	366	452	546
Injection Weight (PS)	110	139	172	157	194	246	230	291	359	333	411	497
Injection Rate	70	89	110	89	110	139	100	127	157	131	162	196
Injection Pressure	218	172	140	210	170	134	214	169	137	210	170	140
Plasticizing Capacity(ps)	9.9	12.4	14.6	12.4	14.6	19.5	14.6	19.5	24	19.5	24	29.6
Screw Speed	0-210			0-190			0-175			0-160		
Clamp Tonnage	860			1200			1600			2000		
Toggle Stroke	300			340			400			450		
Space Between Tie Bars	360x315			405x365			455x410			505x465		
Max.Mold Height	305			380			435			480		
Min. Mold Height	125			130			155			160		
Ejector Stroke	75			100			100			140		
Ejector Tonnage	30			40			40			62		
Max. Pump Pressure	16			16			16			16		
Pump Motor Power	11			13			15			18.5		
Heater Power	6.2			9.75			9.75			14.25		
Machine Dimension(LxWxH)	4.0x1.08x1.9			4.39x1.15x1.98			4.62x1.21x2.02			5.2x1.31x2.1		
Machine Weight	3.1			4.2			4.8			6.1		
Hopper Capacity	25			25			25			50		
Oil Tank Capacity	170			190			240			300		

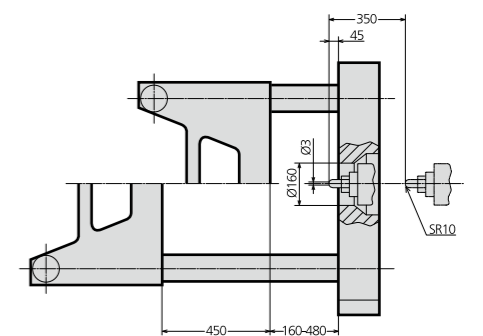
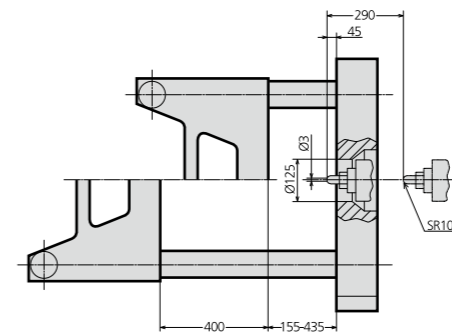
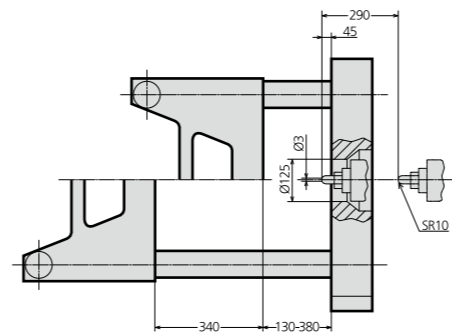
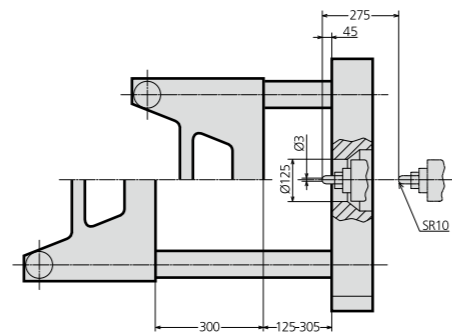
Platen dimensions

Moving platen



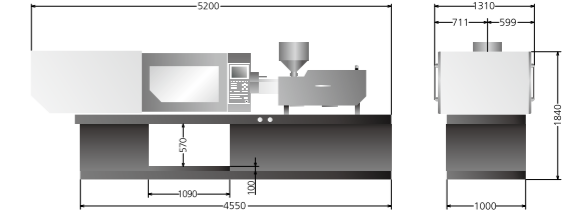
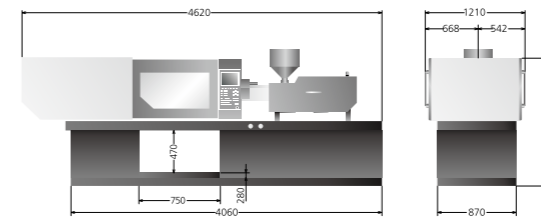
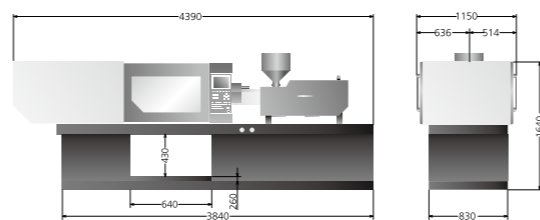
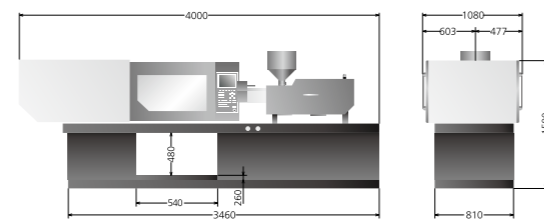
Platen dimensions

Mounting hole for robot/sprue picker top view from fixed platen



Machine dimensions

We reserve the right to make changes as a result of further technical advantages.



Specification

INJECTION UNIT

		PL2500/1000			PL3000/1800			PL3600/2250			PL4500/2900						
		A	B	C	A	B	C	A	B	C	A	B	C				
Screw Diameter	mm	50	55	60	60	65	70	65	70	80	70	80	90				
Screw L/D Ratio		22	20	18.3	21.7	20	18.6	21.5	20	17.5	22.9	20	17.8				
Shot Size (Theoretical)	cm ³	497	601	715	845	992	1151	1068	1239	1619	1424	1860	2354				
Injection Weight (PS)	g	452	547	651	769	903	1047	972	1128	1473	1296	1692	2142				
Injection Rate	g/s	164	198	236	207	242	281	266	309	403	352	460	582				
Injection Pressure	Mpa	204	169	142	213	181	156	208	179	137	203	156	123				
Plasticizing Capacity(ps)	g/s	24	29.6	33.7	33.7	38.2	44.9	38.2	44.9	58.7	44.9	58.7	71.8				
Screw Speed	rpm		0-170				0-165				0-175				0-160		

CLAMPING UNIT

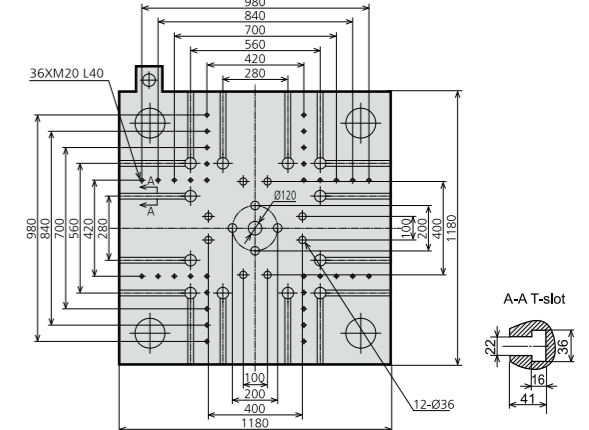
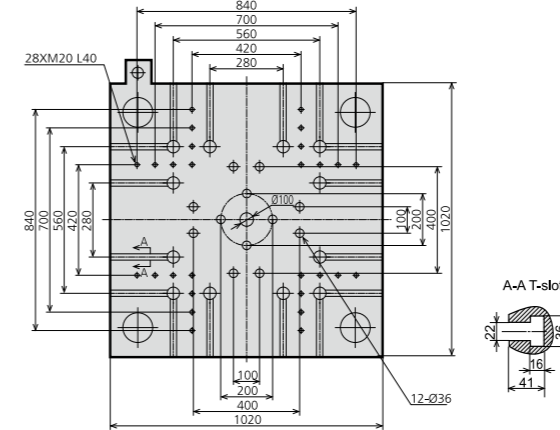
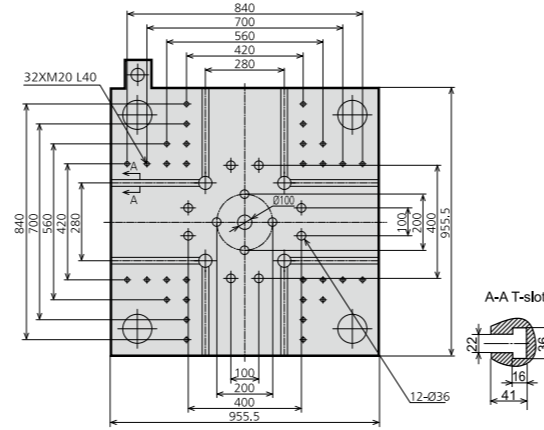
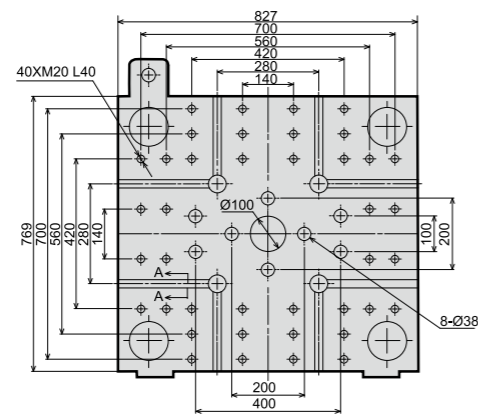
Clamp Tonnage	KN		2500				3000				3600				4500		
Toggle Stroke	mm		510				600				660				740		
Space Between Tie Bars	mm		560x500				660x660				710x710				780x780		
Max.Mold Height	mm		530				660				710				780		
Min. Mold Height	mm		180				250				250				330		
Ejector Stroke	mm		140				160				160				200		
Ejector Tonnage	KN		62				62				110				110		

OTHERS

Max. Pump Pressure	Mpa		16				16				16				16		
Pump Motor Power	Kw		22				30				37				45		
Heater Power	Kw		16.65				19.65				24.85				29.45		
Machine Dimension(LxWxH)	m		5.69x1.39x2.15				6.6x1.9x2.35				6.9x2.1x2.5				7.8x2.3x3.0		
Machine Weight	t		7.4				11.5				14.6				18.5		
Hopper Capacity	Kg		50				50				50				100		
Oil Tank Capacity	L		370				570				690				850		

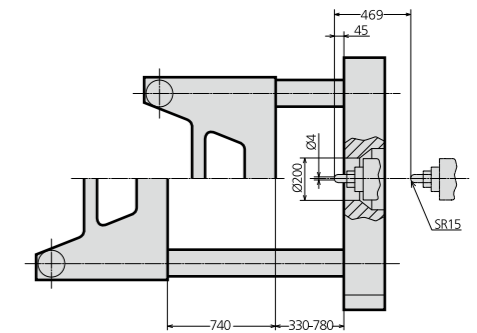
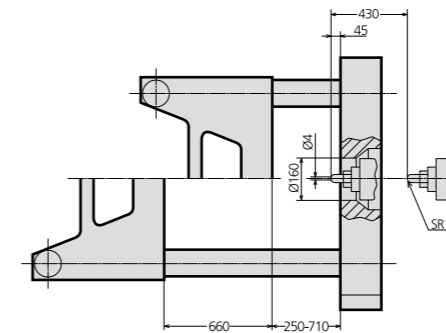
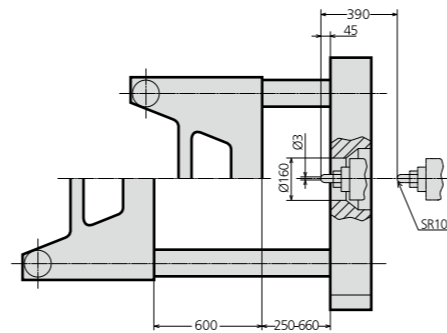
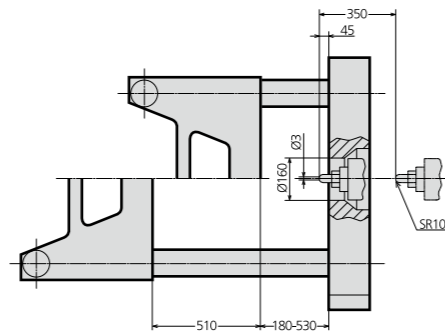
Platen dimensions

Moving platen



Platen dimensions

Mounting hole for robot/sprue picker top view from fixed platen



Machine dimensions

We reserve the right to make changes as a result of further technical advantages.

